



CCTV & DATA RECORDER

This premium Data Recorder system is designed to be installed on workboats, support vessels and all other types of smaller vessels which are exempted from carrying VDR Systems. The X-MDR system can be configured to static mode for office-based Port Authorities which monitor vessel traffic.

The X-MDR provides reliable CCTV recording, synchronised VHF Transmissions, optional bridge audio, and position data as a cost-effective solution, providing stable play back information for individual vessel movements or on vessels within a large fleet.



REAL-TIME SURVEILLANCE AND PLAYBACK

The X-MDR displays live data via the 13.3" touch screen with intuitive, user-friendly software to allow you to monitor recorded information and visual CCTV video feeds in real time.

The specially designed software can offer the user a specific time stamped selection of CCTV feeds, providing High Definition video playback together with all other recorded vessel data.

TAILORED TO YOUR REQUIREMENTS

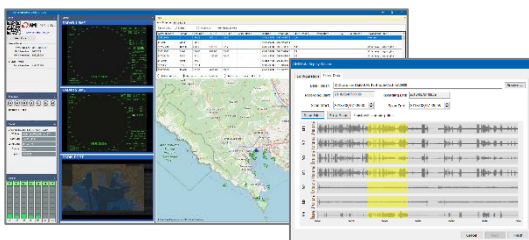
The X-MDR may be configured to your vessel's individual requirements, connecting to all popular brands of bridge equipment. With additional data recording modules, you can maximise your system with VGA and DVI image capture (Radar/Chart Plotters etc.) as well as image over LAN (IEC 61162-450)

The system has 9x NMEA 0183 inputs, 6x Bridge Audio inputs, 2x VHF Audio inputs and up-to 8 CCTV inputs with expandable 2TB Storage that holds approx.20-80 days of data – depending on the amount of data being recorded.

Additional Recording Modules available;

- ECDIS over ethernet (IEC 61162-450)
- DVI Radar/Chart Plotters capture
- Additional Audio inputs
- Optional VHF interface
- Battery Backed UPS upgrade
- Additional NMEA 0183 inputs

REPLAY SOFTWARE



The unique AMI Marine Replay software provides '**Audio Scan**' and '**Jump to Incident**' functions to provide intuitive data review by engineers, ship's crew, accident investigators and even for crew training purposes.

The data download process is easy and straight forward by way of simply using your laptop or Office PC and connecting it to the Ethernet port on the touch screen display, making the downloading of data easy and user friendly when required.

STANDARD SUPPLY SCOPE



1. TOUCH SCREEN DISPLAY
FEATURES:
13.3" Display
High Resolution Touch Screen Display
VESA mounting option
POWER: Supplied from the MEU
DIMENSIONS: 320 x 210 x 68mm 2kg



2. MAIN ELECTRONIC UNIT
FEATURES:
6x Audio Channels
2x VHF Channels
9x NMEA Data Inputs
Up-to 8x HD IP CCTV Camera
1x 1TB Drive - LTRM (11-60 days)
Expanded storage is available
POWER: 24vDC
DIMENSIONS: 330 x 400 x 120mm 7.7kg



3. CCTV CAMERA
FEATURES:
Simple Ethernet connection
2 MP High Definition resolution
IP67 rated
IR range; up to 30m
POWER: Supplied from the MEU
DIMENSIONS: 47 x 39 x 25mm 80g

OPTIONAL EXTRAS



4. INTERNAL MICROPHONE
FEATURES:
600 ohm balanced audio
Built in Self-Test
POWER: Supplied from the MEU
DIMENSIONS: 25 x 125 x 52mm 50g



5. EXTERNAL MICROPHONE
FEATURES:
IP66 Waterproof
600 ohm balanced audio
Built in Self-Test
POWER: Supplied from the MEU
DIMENSIONS: 110 x 80 x 65mm 100g

UPGRADES

6. VIDEO CAPTURE UPGRADE
FEATURES:
Video inputs such as ECDIS or Radar
Accepts video signal of up to 1920x1200

8. SMALLER TOUCH SCREEN DISPLAY*
FEATURES:
Please enquire for more information.
High Resolution Touch Screen Display
VESA mounting option

7. UPS BATTERY BACKUP UPGRADE
FEATURES:
110 to 220vAC 50,60Hz
Battery Backed
Auto switch over to Battery Input on AC fail

9. EXTENDED STORAGE UPGRADE*
FEATURES:
Increase system storage up to 4TB
Allows for approx.40-160 days of data

*All features and specifications are preliminary and may change without notice